

THE HOME DEPOT



Warranty Date Code Reference Guide

Table of Contents

How to Read Date of Manufacture

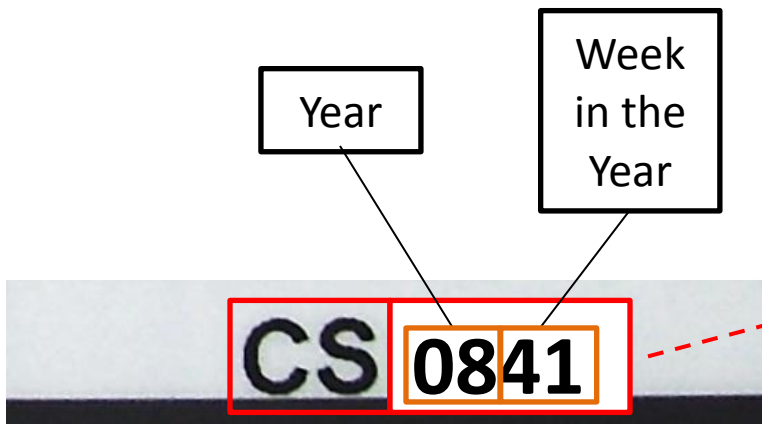
TTI	3 - 4
Ryobi & Ryobi Handheld Electric.....	3
Ridgid, Ryobi & Homelite Outdoor Power.....	4
Toro	5
Toro & Lawnboy Outdoor Power	5
Echo	6
Milwaukee	7 - 8
Briggs & Stratton	9 - 10
Honda	11
Husky	12
Dewalt	13
Makita	14
Paslode	15
Hitachi	16
MTD / Yard Machine	17
Ego	18
Pramac	19
Generac	20
Smarter Tools	21

This is only a reference guide. Refer to the instruction manual for the exact warranty terms and conditions.

Ridgid and Ryobi Handheld Electric Tools

RIDGID. RYOBI

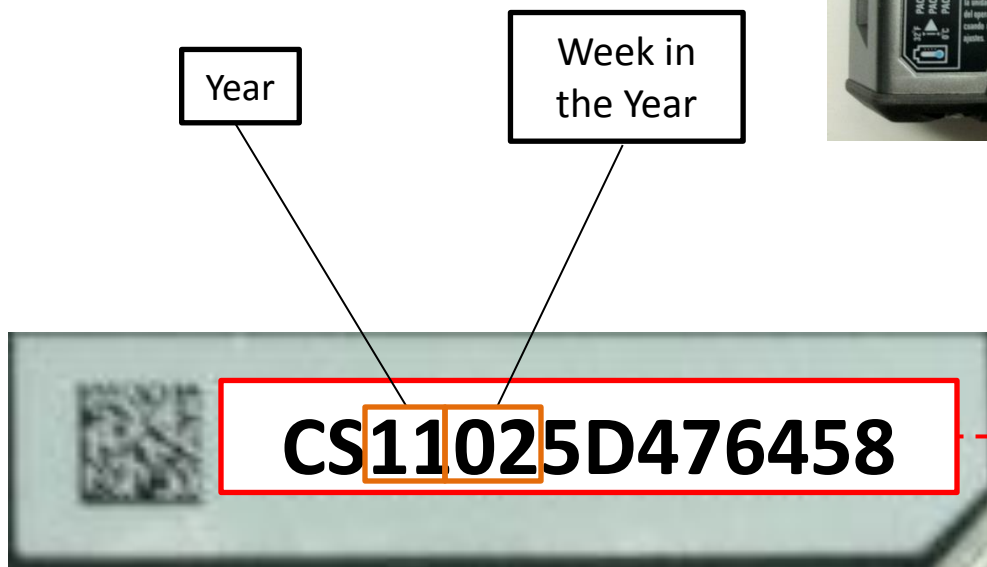
Old Serial Code Format



Example = 41st week of 2008



New Serial Code Format



Example = 2nd week of 2011



Ridgid, Ryobi and Homelite Outdoor Power Tools

RIDGID.

RYOBI

Homelite®

Original Serial Number Format

■ Outdoor Power Tools

Day/Month & Alpha Year Conversion:			
Day#	Month	Letter	Year
01-31.....	Jan.	K	2007
32-59.....	Feb.	L	2008
60-90.....	Mar.	M	2009
91-120.....	Apr.	N	2010
121-151.....	May	P	2011
152-181.....	Jun.	R	2012
182-212.....	Jul.	S	2013
213-243.....	Aug.	T	2014
244-273.....	Sep.		
274-304.....	Oct.		
305-334.....	Nov.		
335-365.....	Dec.		



BMK3080586
K = Year **308** = Day
 Manufacture Date = **November 2007**

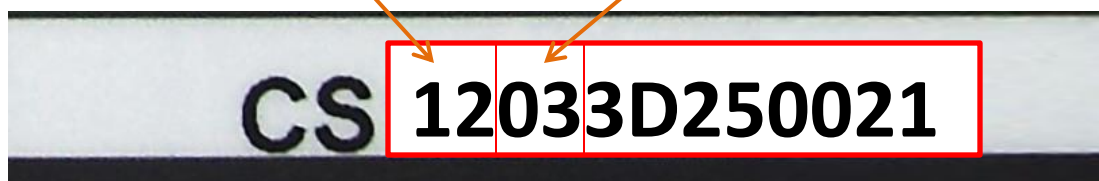


01-16-08
01 = Month **16** = Day **08** = Year
 Manufacture Date = **January 16 2008**

New Serial Number Format

First 2 numbers
indicate year manuf.

Week during the year of
manufacture



Example = 3rd week in 2012

Toro and Lawnboy Outdoor Power Tools



A.

- Serial # format prior to 2010 all start with a 2
- The next digit(s) represent the year of manufacture
- There is no month captured in the serial #
- Use January 1 as the default month and day

Year of manufacture



Example = 2006 (no month or day captured in serial #)

B.

- Serial # format beginning in 2010 all start with a 3
- The next 2 digit(s) represent the year of manufacture
- There is no month captured in the serial #
- Use January 1 as the default month and day

Year of manufacture



Example = 2010 (no month or day captured in serial #)

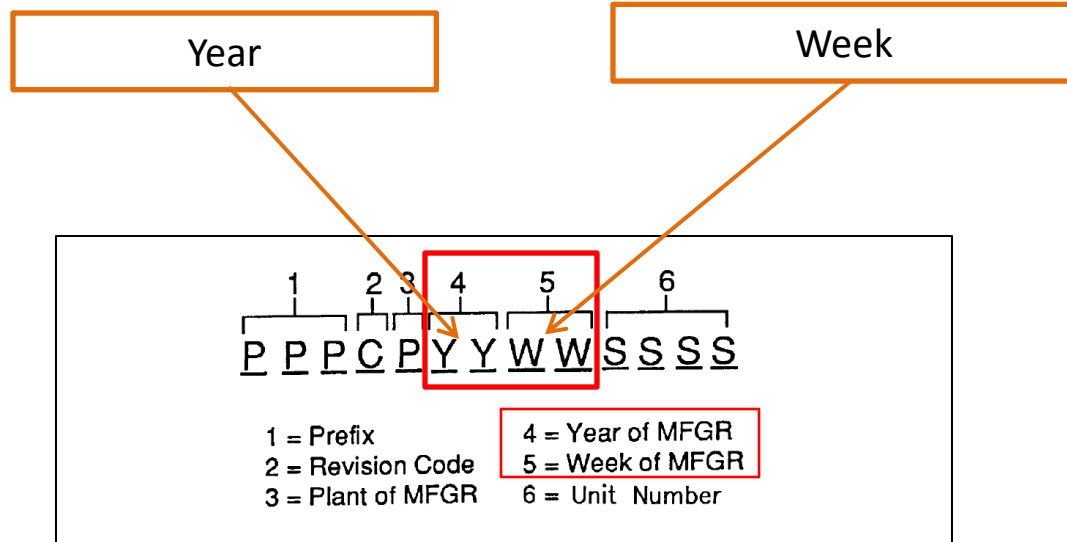
Echo Outdoor Power Tools



Month and Year



Milwaukee Handheld Electric Tools



Example: 790AA4**9227**1001 = 27 week of 1992

Milwaukee - Reading Battery Pack Date Codes



Product	Description		Where to Find
48-11-0100	2.4V Ni-CD	b,d,e	heat stamp terminal end or side, next to catalog no.
48-11-0490	4.0V 10Wh Li-Ion	c,h	top housing, heat stamp
48-11-1024	14.4V Ni-CD	e	top housing, between latches or bottom, next to data plate
48-11-1815	18.0V 27Wh Li-Ion	g,h	bottom housing, nameplate serial number or top housing, heat stamp
48-11-1820	18.0V 36Wh Li-Ion	g,h	bottom housing, nameplate serial number or top housing, heat stamp
48-11-1828	18.0V 54Wh Li-Ion	g,h	bottom housing, nameplate serial number or top housing, heat stamp
48-11-1830	18.0V 54Wh Li-Ion	g,h	bottom housing, nameplate serial number or top housing, heat stamp
48-11-1840	18.0V 72Wh Li-Ion	h	top housing, heat stamp
48-11-1970	12.0V Ni-CD	e	top housing, between latches or bottom, next to data plate – ink stamp
48-11-2001	4.0V 8Wh Li-Ion	h	top housing, heat stamp
48-11-2230	18.0V Ni-CD	e	top housing, between latches or bottom, next to data plate
48-11-2401	12.0V 16Wh Li-Ion	f	top housing, heat stamp
48-11-2402	12.0V 32Wh Li-Ion	g,h	bottom housing, nameplate serial number or top housing, heat stamp
48-11-2420	12.0V 22Wh Li-Ion	h	top housing, heat stamp
48-11-2440	12.0V 43Wh Li-ion	h	top housing, heat stamp
48-11-2830	28.0V 76Wh Li-Ion	g,h	bottom housing, nameplate serial number or top housing, heat stamp

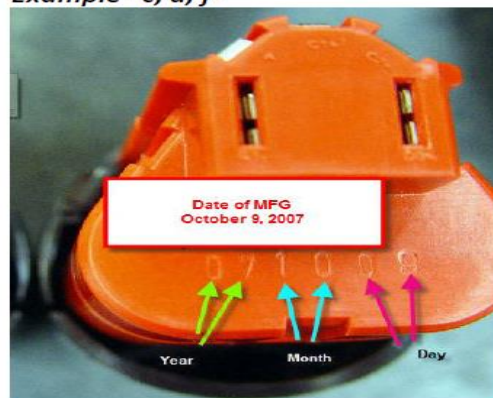
How to Read

b	1498	14 = WEEK	98 = YEAR		
c	970210	97 = YEAR	02 = MONTH	10 = DAY	
d	80327A / 50206	8 = YEAR, i.e. '88, '98	03 = MONTH	27 = DAY	A = PLANT
e	4297S	42 = WEEK	97 = YEAR		S = PLANT
f	070628 / S070628	07 = YEAR	06 = MONTH	28 = DAY	S = PLANT
g	AXXAX0712XXXX	07 = YEAR	12 = WEEK		
h	130320R	13 = YEAR	03 = MONTH	20 = DAY	R = PLANT

Example "b, e"



Example "c, d, f"



Briggs & Stratton Power Tools



Code Location Model 12 Quantum Location



Code Location OHV model 9 & 10-500 Series



Briggs & Stratton Power Tools



How to Read the Date Code

Example - November 16, 2010

128T02-1270-B1 Code 10111659

Year Month Day

Honda Outdoor Power



To look up a Honda date code you need access to the Honda web portal which TRC technicians don't have. Please email the repair tag number and serial number to repair@homedepot.com. Your support team will verify the date code through the Honda web portal, and provide you with all necessary information.

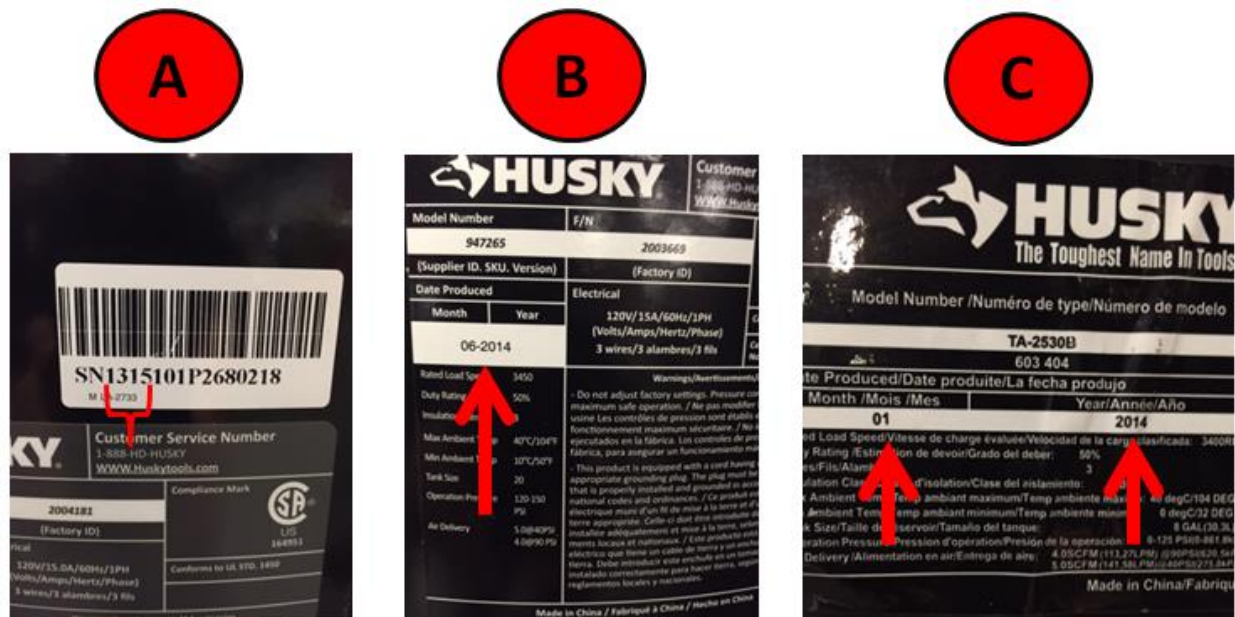


How to Read the Date Code

You will typically find 1-3 ways to read the date code on a Husky unit.

Figure A: This is the format you will see on most of the older model Husky units. The date is derived from the first (4) numbers on the serial barcode. The first two represent the year, while the second two represent the week. In this example the units manufacture date would be the 15th week of 2013.

Figure B & C: One of these two formats is more common on newer Husky units. Each one clearly breaks out the Month and the Year of manufacture.





How to Read the Date Code

You will typically find 1-3 ways to read the date code on DeWALT units depending on the age and equipment type.

Figure A: This is the format you will see on most large equipment types such as air compressors. The manufacture date will be imbedded in the first four digits of the serial barcode. The first two will be the year followed by the next two which are the week. This unit was manufactured in the 32nd week of 2008.

Figure B & C: One of these two formats is more common on smaller handheld electric equipment types. Figure B is an example of an older handheld electric (corded drill) unit where DeWALT chose to stamp the manufacture date on the underside or belly of the unit. This example would read as the 50th week of 2012. Figure C which is more common on newer units (especially battery powered) is an example of the date printing on the lip of the battery terminal connection. Dates will always read as the year first followed by the two digit week.





How to Read the Date Code

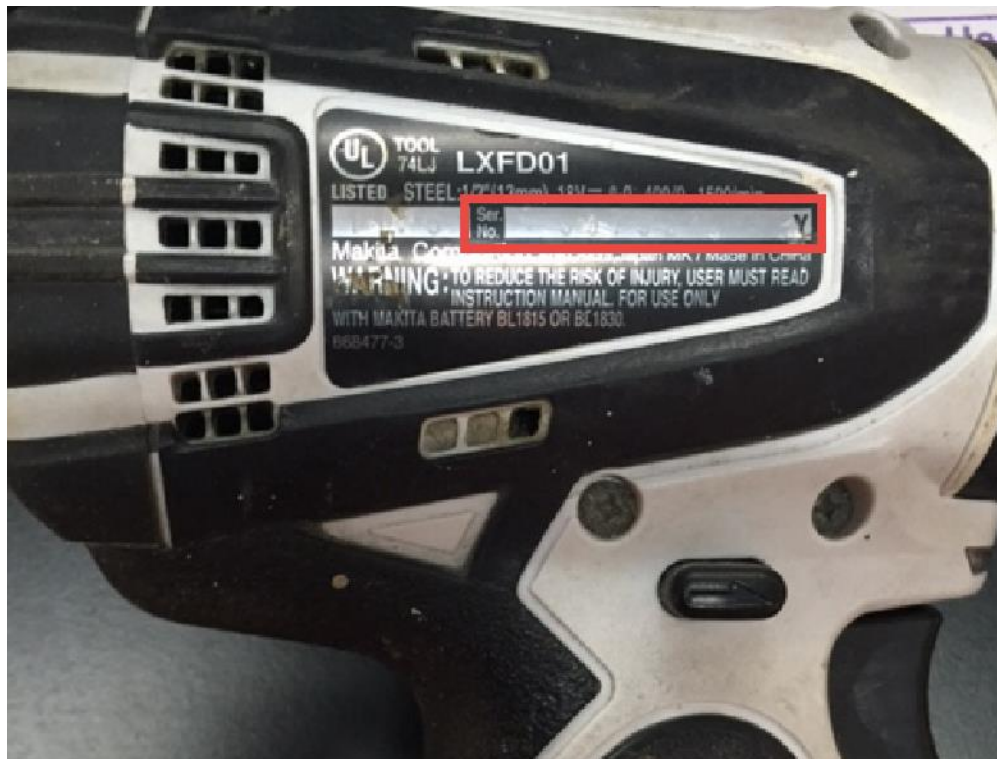
Date codes for Makita branded products can be derived from the serial number which is most often visible on a reflective strip within the product information sticker. The date code does differ slightly between tools and batteries.

Handheld Tools: The date code is derived from the first four digits on the serial number.

- First Two Digits = Year
- Second Two Digits = Month

Batteries: The date code is derived from the first four digits on the serial number

- First Two Digits = Year
- Second Two Digits = Week



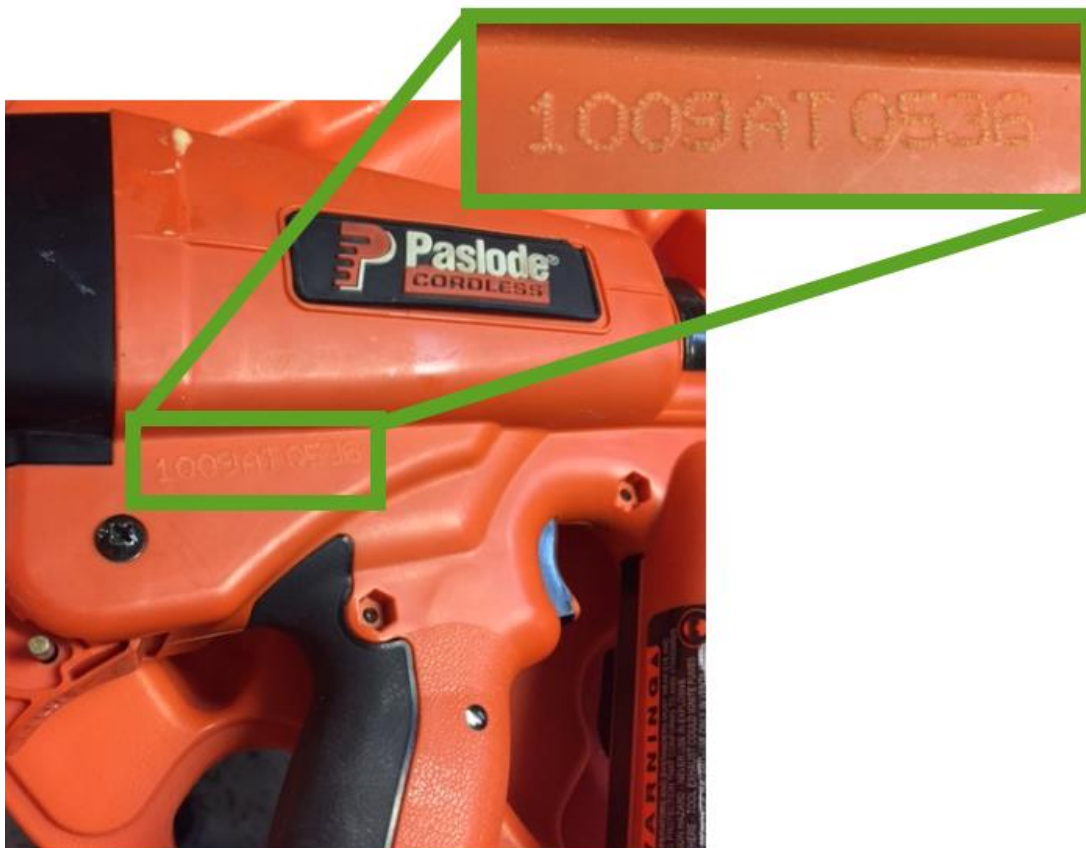


How to Read the Date Code

Serial numbers for Paslode tools are not found on a sticker, but rather etched into the tool itself. The date code is derived from the first four digits of the serial number.

- First Two Digits = Year
- Second Two Digits = Month

In the example below, the date code associated with this nailer would be September (09) of 2010 (10).





How to Read the Date Code

Deciphering the date code on Hitachi units is a slightly different process from most other OEM's because Hitachi uses letters to represent certain months of the year. The date code will always be found in the first 3 digits of the serial number. Newer models start with a "Q". If the serial number starts with a "Q", the date code is derived from the following 3 digits.

- January – September = 1 through 9 chronologically
- October, November, December = O, N, D
- The digit following the month = Year

2010 = 0 / 2011 = 1 / 2012 = 2 / 2013 = 3 / 2014 = 4

In the example below, the date code would read as November (N) of 2013 (3).



How to Read the Date Code

Date codes for MTD, Yard-Man, Yard Machines, Bolens, and White Outdoor tools are deciphered from the 11 character serial number. The second, third, fourth, and fifth characters of the serial number indicate the date of manufacture. In the case below, the D.O.M. is December 15th, 2004.

- L = Month (December; L is the 12th letter of the alphabet)
- 15 = Day of the Month
- 0 – Year (Last digit of a particular year; zero indicates 2000, 2010, etc...)





How to Read the Date Code

Date codes for EGO products are similar to Ridgid and Ryobi date codes in that they are derived from the first four digits of the serial number. Serial numbers will always begin with a “U”. The next values represent the year and the week of manufacture. Please reference the example below.

- First two numerical values are “14” which represents the year 2014
- The third and fourth values are “03” which represent the third week of the year

This unit was manufactured during the third week of 2014.

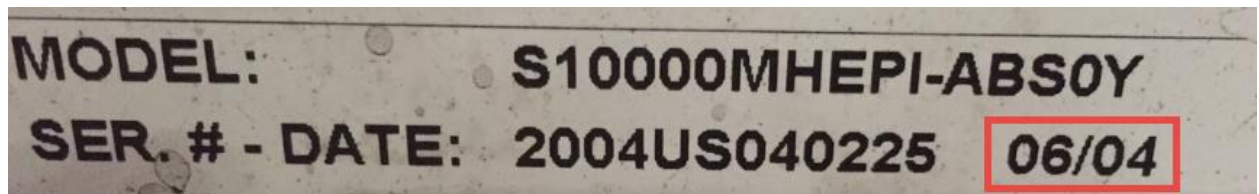




How to Read the Date Code

Each Pramac generator has a unit identifier sticker which labels the Model Number, Serial Number, Manufacture Date, Voltage, Peak Power, and Cont. Power. The Manufacture Date is located on the same line as the Serial Number at the very end. The month will always be listed before the year. The example below is taken from a unit manufactured in June of 2004

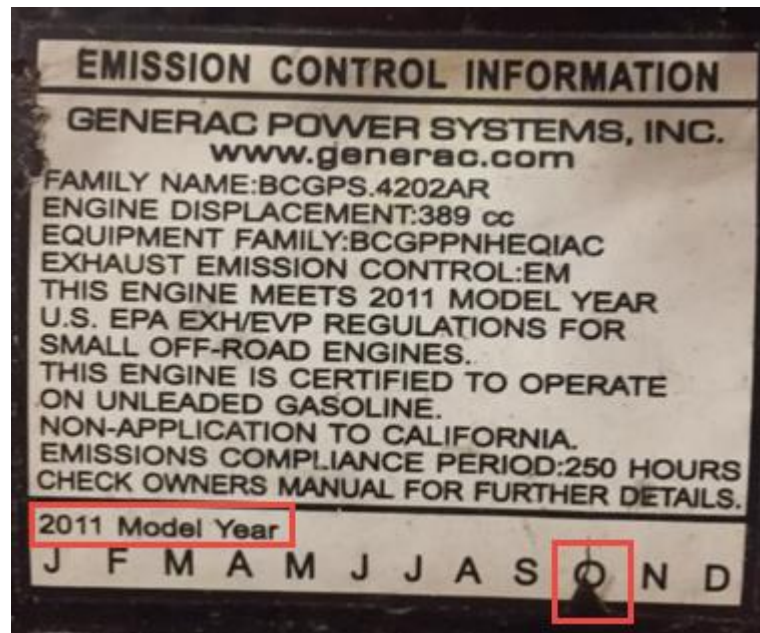
- 06 represents the sixth month of the year (June)
- 04 represents the year (2004)
- This unit was manufactured in June of 2004





How to Read the Date Code

The easiest way to pull the date of manufacture for Generac units is to read directly from the ECI (Emission Control Information) sticker. An annual month to month listing is located at the bottom of each sticker. The year of manufacture will be clearly printed, while the month will be marked with a triangular indicator on a month to month listing. The unit below was manufactured in October of 2011.





How to Read the Date Code

Similar to Generac units, the easiest way to pull the date of manufacture for a Smarter Tools unit is to read directly from the ECI (Emission Control Information) sticker. The year of production will be listed in the bottom left corner of the sticker. The month will be marked with a bold circle on the numerical month to month list. The unit below was manufactured in June of 2013.

